



25000

INTERNATIONAL APPLICATION PUBLISHED UNDER THE PATENT COOPERATION TREATY (PCT)

(51) International Patent Classification ⁵ : A01N 1/02	A1	(11) International Publication Number: WO 93/00005 (43) International Publication Date: 7 January 1993 (07.01.93)
<p>(21) International Application Number: PCT/US92/05033</p> <p>(22) International Filing Date: 15 June 1992 (15.06.92)</p> <p>(30) Priority data: 718,747 21 June 1991 (21.06.91) US</p> <p>(71) Applicants: BAXTER INTERNATIONAL INC. [US/US]; One Baxter Parkway, Deerfield, IL 60015 (US). QUADRA LOGIC TECHNOLOGIES INC. [CA/CA]; 520 West 6th Avenue, Vancouver, British Columbia V5Z 4H5 (CA).</p> <p>(72) Inventors: CHAPMAN, John ; 67 Kevin Avenue, Lake Villa, IL 60046 (US). LOGAN, Patricia, M. ; 462 Aubrey Place, Vancouver, British Columbia V5V 2T6 (CA). NEVNDORFF, Herma, C. ; 1265 West 10th Avenue, Vancouver, British Columbia V6H 1J5 (CA). NORTH, Janice ; 4335 West 10th Avenue, Vancouver, British Columbia V6R 2H6 (CA).</p>	<p>(74) Agents: PRICE, Bradford, R., L. et al.; One Baxter Parkway, Deerfield, IL 60015 (US).</p> <p>(81) Designated States: AU, CA, JP, European patent (AT, BE, CH, DE, DK, ES, FR, GB, GR, IT, LU, MC, NL, SE).</p> <p>Published <i>With international search report.</i></p>	
<p>(54) Title: METHOD FOR INACTIVATING PATHOGENS IN A BODY FLUID</p> <p>(57) Abstract</p> <p>The present invention provides a method for inactivating pathogens in a body fluid, such as plasma, red cells, platelets, leukocytes, and bone marrow. The present invention minimizes adverse effects caused by the photosensitive agents while retaining the disinfecting activity of such agents and processes. Pursuant to the present invention, prior to irradiating a body fluid including a photoactive drug, the extracellular fluid, which in the case of blood components includes plasma proteins is at least substantially reduced. Additionally, after the irradiation process, the resultant body fluid is prevented from contacting additional extracellular fluid, e.g., plasma proteins, for a predefined period.</p>		

FOR THE PURPOSES OF INFORMATION ONLY

Codes used to identify States party to the PCT on the front pages of pamphlets publishing international applications under the PCT.

AT	Austria	FI	Finland	MI	Mali
AU	Australia	FR	France	MN	Mongolia
BB	Barbados	GA	Gabon	MR	Mauritania
BE	Belgium	GB	United Kingdom	MW	Malawi
BF	Burkina Faso	GN	Guinea	NL	Netherlands
BG	Bulgaria	GR	Greece	NO	Norway
BJ	Benin	HU	Hungary	PL	Poland
BR	Brazil	IE	Ireland	RO	Romania
CA	Canada	IT	Italy	RU	Russian Federation
CF	Central African Republic	JP	Japan	SD	Sudan
CG	Congo	KP	Democratic People's Republic of Korea	SE	Sweden
CH	Switzerland	KR	Republic of Korea	SN	Senegal
CI	Côte d'Ivoire	LI	Liechtenstein	SU	Soviet Union
CM	Cameroon	LK	Sri Lanka	TD	Chad
CS	Czechoslovakia	LU	Luxembourg	TG	Togo
DE	Germany	MC	Monaco	US	United States of America
DK	Denmark	MG	Madagascar		
ES	Spain				

"METHOD FOR INACTIVATING PATHOGENS
IN A BODY FLUID"

5

BACKGROUND OF THE INVENTION

The present invention relates generally to a method for inactivating pathogens that may be contained in a body fluid. More specifically, the present invention relates to the inactivation of pathogens, especially in blood products, that can cause an infectious disease.

10 In a variety of therapies, such as transfusion and transplants, body fluids, especially blood components, such as red blood cells, platelets, plasma, leukocytes, and bone marrow, are infused from one or more individuals into a patient. Although such therapies provide treatments, some of which are life saving, and cannot otherwise be provided, due to the transmission of infectious diseases there may be potential risks to such therapies.

20 For example, it is known that blood can carry infectious agents such as hepatitis viruses, human immuno-deficiency viruses (an etiological agent of AIDS) and herpes virus. Although screening methods exist to identify blood that may include such viruses, blood containing viruses, and other disease causing pathogens, such as bacteria, cannot be 100% eliminated from the pool of possible blood component supplies; there is still a small chance that blood transfusions can transmit viral infection. Accordingly, a goal of biomedical research has been to reduce the risk of transmitting an infectious agent by selectively inactivating or depleting pathogens present in such blood components.

- 2 -

One approach has been to utilize photosensitive (photoactive) agents that when activated by light of the appropriate wavelength will destroy the ability of the pathogen to cause infection. The use of photodynamic therapy has been suggested as a way to eradicate infectious agents from collected blood and its components prior to storage and transfusion. See, Neyndorff, et al, "Development of a Model to Demonstrate Photosensitizer Mediated Viral Inactivation in Blood", Transfusion 1990:30:485-490; North et al, "Photodynamic Inactivation of Retrovirus by Benzoporphyrin Derivative: A Feline Leukemia Virus Model", Submitted to Transfusion; and Matthews et al, "Photodynamic Therapy of Viral Contaminants With Potential for Blood Bank Applications", Transfusion, 28(1), pp. 81-83 (1988).

Although effective in the destruction of the pathogen, photochemical inactivation of pathogens can also result in adverse effects on the therapeutic elements of the product, such as red blood cells or platelets. In this regard, it has been observed through immunohematology studies, that cells of blood components treated with photoactive agents which act on membranes have IgG and other plasma proteins associated with the cell membrane. IgG is an immunoglobulin plasma protein that when present is caused to bind with the cells during the photoactivation process.

Recent attempts to avoid this phenomenon have been unsuccessful. Wagner, et al., "Red Cell Surface Alterations Resulting From Virucidal Photochemical Treatment", Photochemistry & Photobiology 53:545, 1991, reports that "[u]nexpectedly, agglutination tests using rabbit anti-human IgG on [methylene blu] or [merocyanin 540] phototreated cells indicated that photosensitized

- 3 -

red-cells have IgG associated with their surface. Plasma depletion by washing red cells prior to photo-treatment did not prevent this IgG binding upon subsequent addition of untreated autologous or AB plasma."

5 The presence of IgG bound to the membrane of red cells raises a host of potential concerns and difficulties in using photoinactivation drugs to inactivate pathogens in blood components. Physiological issues include reticuloendothelial system clearance of
10 the treated red cells and complement activation. Red cells coated with IgG may be removed too quickly in a transfusion patient by the RES system.

 Perhaps as important a concern with respect to IgG binding, even if the presence of IgG has no effect on
15 cell survival or product safety, is with respect to the diagnostic implications. After treatment, the IgG bound to the cells cannot be removed from the cell membranes by washing the cells; even if extensive washings are performed. Because of the binding of the IgG to the
20 cells, the cells exhibit a positive test result when direct antiglobulin test (DAT or Coombs') is employed.

 The Coombs' test is used to detect antibody on red blood cells. The test uses rabbit antisera to immunoglobulin. When cells coated with IgG are mixed
25 with the rabbit antisera, agglutination occurs. If IgG coated red cells are transfused into a patient, a physician loses one of his important diagnostic tests in understanding hematologic changes in the patient, since all patients receiving such a product will exhibit
30 a positive Coombs' test.

 The use of such IgG coated cells would prevent many of the currently used serological and diagnostic testing procedures. For example, red cells are typically

screened using the Coombs' test. Accordingly, although the photoactive agents can result in a reduction of viable pathogens, the resulting disadvantages inherent in IgG bound red cells may outweigh the advantages.

5 Further, any commercially viable process for inactivating pathogens must have an activation phase that does not have an undue duration. The photoactivation phase of such photodynamic processes is dependent on the amount of photoactive agent present. However, initially
10 the body fluid must be loaded with a sufficient amount of photoactive agent to insure that all of the pathogens bind with the agent. Therefore, excess photoactive agent could increase the activation phase of the process.

SUMMARY OF THE INVENTION

15 The present invention provides a method for inactivating pathogens in a body fluid, such as red cells, platelets, leukocytes, and bone marrow. The present invention minimizes adverse effects caused by the photosensitive agents while retaining the disinfecting
20 activity of such agents and processes. To this end, at least 5-6 logs of viruses are inactivated in a red cell unit with less than 2% hemolysis over a fourteen (14) day storage period pursuant to an embodiment of the present invention. The procedure results in the killing of
25 pathogenic contaminants, such as viruses. The normal cells, or tissues, maintain their functional integrity and in the case of red cells, do not exhibit a positive direct antiglobulin test.

30 Pursuant to the present invention, a method for destroying pathogens in a fluid containing cells prepared for medical use is provided comprising the steps of treating the cells in the presence of a photoactive agent under conditions that effect the destruction of the

pathogen, the treatment step being performed in a fluid having a reduced content of extracellular protein and additionally, after the irradiation process, the resultant body fluid is not allowed to contact such extracellular protein, e.g., plasma proteins, for a predefined period.

It has been found, with respect to red cells, that after activation of the photoactive agent that at least some of the red cells have a nonspecific affinity for plasma proteins. If the irradiated red cells are combined with plasma proteins, either in vivo or in vitro, within a certain time period after the irradiation process they will bind with at least the IgG proteins present in the plasma. However, if one waits a predetermined time period, the red cells will not significantly bind with plasma proteins including IgG. It has been found with respect to benzoporphyrin derivatives that a waiting period of at least approximately three (3) hours is sufficient. In an embodiment, the preferred waiting period is approximately eighteen (18) hours.

The extracellular fluid can be removed from the body fluid through washing, filtration, or other methods, either prior to or after the photoactive agent is added to the body fluid.

In an embodiment, the present invention provides a method for inactivating pathogens in a body fluid comprising the steps of: adding a photoactive agent to a collected body fluid; treating the body fluid to remove, or at least substantially reduce, the unbound photoactive agent and the extra-cellular components; and irradiating a resultant body fluid with an appropriate

- 6 -

light to inactivate pathogens in the resultant body fluid.

5 In an embodiment, a method for inactivating a pathogen in a blood component is provided comprising the steps of: adding a photoactive agent to a collected blood component; allowing the photoactive agent to equilibrate with the blood component; treating the blood component to substantially reduce or remove unbound photoactive agent and plasma protein; irradiating a resultant blood component with light of an appropriate wavelength to inactivate pathogens; and waiting at least approximately three (3) hours before allowing the resultant blood component to contact plasma and/or other protein containing material.

10 15 In an embodiment, a method is provided for inactivating a pathogen in a blood component including red cells comprising the steps of: treating a blood component to reduce the plasma proteins; adding a photoactive agent to the blood component; irradiating a resultant blood component with light of appropriate wavelength to inactivate pathogens; and preventing the irradiated blood component from contacting a protein containing composition for a predetermined period.

20 25 Preferably, pursuant to the present invention, not more than approximately 5% by weight of the total weight of the blood component comprises plasma proteins remain after the treating steps.

30 In an embodiment of the present invention, the photoactive agent is chosen from the group including, but not limited to: porphyrins; porphyrin derivatives; merocyanines, such as MC540; phthalocyanines, such as aluminum phthalocyanine, other pyrrolic macrocycles; psoralens; and other photoactive dy stuffs, such as

methylene blue. In a preferred embodiment, the photoactive drug is a benzoporphyrin derivative.

5 In an embodiment, the step of allowing a photoactive drug to equilibrate has a duration of approximately 5 minutes to about 6 hours.

In an embodiment, the treating step includes a washing step comprising: centrifuging the blood component product to form a pellet; removing the supernatant; and resuspending the pellet.

10 In an embodiment, the treating step includes a filtration step.

If desired, a plurality of washing steps can be utilized in the method of the present invention.

15 In an embodiment, a storage solution is added to the irradiated resultant product.

In an embodiment after at least a three (3) hour period the blood component is infused into a patient.

20 Additional features and advantages of the present invention are described in, and will be apparent from, the detailed description of the presently preferred embodiments and from the drawing.

BRIEF DESCRIPTION OF THE DRAWING

25 Figure 1 illustrates conceptually a three compartment model for the distribution of a photosensitive drug when added to an unwashed blood component.

Figure 2 illustrates graphically BPD inactivation of VSV as a function of light dose using a no wash and wash process.

30 Figures 3a-3c are graphs of flow cytometric analysis of IgG binding to red blood cells.

Figures 4a-4b are graphs of flow cytometric analysis of IgG binding to red blood cells.

- 8 -

DETAILED DESCRIPTION OF THE
PRESENTLY PREFERRED EMBODIMENTS

5 The present invention provides a method for inactivating pathogens in a body fluid. Specifically, the present invention is directed to a method for inactivating pathogens such as viruses that cause the transmission of infectious disease, from blood and blood component supplies.

10 As used herein, the term "body fluid(s)" includes blood components such as, plasma or plasma components, red cells, leukocytes, and platelets, bone marrow, cells generated in tissue cultures, and semen. However, reference in the instant patent application, by way of example, is made to blood components and specifically red
15 cells.

Generally, the method of the present invention inactivates pathogens by adding a photoactive agent to the body fluid and activating the photoactive agent to inactivate the pathogen. With respect especially to
20 blood components, prior to either the addition of the photoactive agent or irradiation of same, plasma proteins, such as IgG, are removed or substantially reduced. After the irradiation step of the method, the blood component is not infused into a patient or combined
25 with plasma and/or other protein containing material until after the expiration of a predefined time period.

It is believed, at least with respect to BPDs, that this time period should be at least approximately three (3) hours and preferably approximately eighteen (18)
30 hours. The time period may be different depending on the photoactive agent that is utilized. What is critical is that there is some time delay between photoactivation and plasma protein contact.

The present invention provides many advantages including an increased "therapeutic window" for treatment. The method results in increased viral inactivation and/or depletion.

5 It has also been found that with respect to red cells, the method results in increased stability of the red cells on storage compared to those cells wherein a photoactive agent is activated in the presence of plasma proteins. Additionally, the method eliminates the
10 previous problems of direct antiglobulin test (DAT) positivity.

Further, smaller quantities of photosensitizer (BPD) are required to achieve maximum (up to 100%) viral inactivation and/or depletion. Likewise, in an
15 embodiment of the invention, decreased amounts of photosensitizers and/or photoproducts are present in final product by using a washing step carried out following incubation with photosensitizer and immediately before light exposure.

20 In an embodiment, the method comprises the steps of adding a photoactive agent to a collected body fluid, such as a blood component. The photoactive agent is allowed to equilibrate with the body fluid. The body fluid is then treated through washing or some other step
25 to remove, or at least substantially reduce, unbound photoactive agents and extra-cellular material, e.g. plasma and proteins. The resultant body fluid is then irradiated with an appropriate light to inactive pathogens in the resultant body fluid.

30 A number of photoactive agents have been identified that have membrane activity and can, when irradiated, inactivate pathogens, such as viral agents, in the blood. These photoactive agents include porphyrins, porphyrin

- 10 -

derivatives, merocyanines such as MC 540, phthalocyanines such as aluminum phthalocyanine, other pyrrolic macrocycles, psoralens, and photoactive dye stuffs such as methylene blue. As previously noted, at least some
5 of these photoactive agents can also exhibit certain disadvantages when used with at least some body fluids, such as red blood cells. The present invention avoids these disadvantages while maintaining the advantageous effects of these agents.

10 Photoactive compounds include, by way of example, a family of light-activated drugs derived from benzoporphyrin. These derivatives are commonly referred as BPDs. BPDs are available from Quadra Logic Technologies, Inc., Vancouver B.C., Canada.

15 BPDs, similar to other types of hematoporphyrin derivatives, have an affinity for the cell walls or membranes of many viral organisms that are carried in blood. They therefore bind or attach themselves to the cell walls or membranes. When exposed to radiation, BPDs
20 undergo an energy transfer process with oxygen, forming singlet oxygen. When the singlet oxygen oxidizes, it kills the biological cells to which it has attached. Other photochemical events may contribute to cell killing.

25 It has been found that when at least a blood component is used, the plasma proteins must be eliminated, or at least substantially reduced, prior to irradiation of the photoactive agent. The elimination, or substantial reduction, of the plasma proteins can
30 occur either prior to adding the photoactive agent to the blood component or after it is added. As discussed in detail hereinafter, certain additional advantages are achieved depending on when the removal step occurs.

- 11 -

Regardless, as also set forth in detail below, a critical step is that after the irradiation process, the blood component is prevented from contacting, either in vivo or in vitro, additional plasma proteins for a predefined time period. It is believed, at least with respect to BPDs, that this time period should be at least approximately three (3) hours after irradiation.

Pursuant to an embodiment of the present invention, first the photoactive agent is added to the component fluid, for example, red blood cells. The photoactive agent is allowed to equilibrate with the fluid, e.g., red cells. As used herein, "equilibrate" means that the agent is distributed to the different compartments of the fluid. However, equilibrate does not mean that equilibrium is necessarily achieved.

Referring to Figure 1, in the model illustrated, the blood component comprises three compartments: blood cells; pathogens; and plasma proteins and aqueous media (extra-cellular fluid). Figure 1 illustrates the equilibrated state with respect to: the blood cells and pathogens; the plasma proteins and pathogens; and the plasma proteins and blood cells. The equilibrated state is important to insure that all, if not a substantial portion, of the pathogens will be inactivated.

Applicants have found that preferably the time required after the photoactive agent is added to the fluid to reach the equilibrated stage is approximately five (5) minutes to about six (6) hours. Within five (5) minutes it is believed that sufficient agent is distributed to the pathogen compartment. Applicants have found that after approximately one (1) hour the pathogen compartment is fully loaded; after one hour, viral inactivation is not increased upon illumination.

- 12 -

In this embodiment of the method, at this stage in the process, the extra-cellular fluid (plasma protein) has not been separated from the cell component (red blood cells). Certain advantages are achieved by not removing the extra-cellular fluid, prior to adding the photoactive agent. Because the extra-cellular fluid compartment includes lipoproteins it acts as a reservoir station during the process.

In this regard, the ratio of photoactive agent in the red blood cell compartment to the pathogen compartment is critical. With respect to at least some lipophilic photoactive agents, if the plasma protein is washed away prior to adding the photoactive agent, the ratio of photoactive agent within the pathogen compartment to the blood cell compartment may shift in an undesirable fashion.

Ideally, it would be desirable if all of the photoactive agent were included in the pathogen compartment and none in the red cell compartment. By allowing the plasma protein to remain, (initially when the agent is being distributed between the pathogen, blood cell and extracellular compartments), a large portion of the photoactive agent is prevented from entering into the blood cell compartment while still allowing the pathogen compartment to be adequately loaded. The extracellular compartment contains lipids, lipoproteins, and proteins which bind lipophilic photoactive agents in a reversible manner and thereby can serve as carriers for the distribution of the photoactive agents. The net result of having the extracellular lipid/proteins present at the time of addition of many lipophilic photoactive agents is that an adequate loading

- 13 -

of the pathogen compartment can be achieved while minimizing the loading of the blood cell compartment.

5 It has been found that when the plasma proteins are not initially removed and remain when the photoactive agent is added to blood component, after the agent
10 equilibrates with the fluid, approximately 80 to about 90% of the photoactive agent is found in the extra-cellular (protein) compartment and approximately 10 to about 20% in the cellular (red cell) compartment. Therefore, after the plasma proteins are washed out, at most only 20% of the photoactive agent loaded into the blood component remains.

15 An advantage achieved by removing the plasma protein after the photoactive agent is added, is that excess photoactive agent including that which may be free or bound, can be removed. It is believed that even if the photoactive agent does not bind with a blood component cell membrane, the photoactive agent can cause cell damage. Damage may occur secondary to oxidative damage
20 caused by singlet oxygen or other photochemical events generated by the photoactive agent activation adjacent to, but outside, the cell membrane.

25 Additionally, it may be desirable to remove the excess photoactive agent to reduce the generation of any photoproducts. By washing out the unbound photoactive agent prior to irradiation, one can reduce the risk of the generation of such photoproducts.

30 A further advantage of treating the blood component to remove unbound photoactive agents is that it may decrease the light exposure time required to disinfect the product. By removing unbound photoactive agents, one may be able to shorten the light exposure time required to achieve a given microbicidal effect after washing

- 14 -

away the unbound photoactive agent. This may be important, with respect to processing large numbers of, for example, red cell units.

5 As previously noted, if desired, the plasma proteins can be removed prior to the addition of the photoactive agent. Certain advantages may be achieved through this embodiment of the method. For example, with respect to photoactive agents that are hydrophilic, if the blood component is washed after such photoactive agents are added, all or most of the photoactive agent may be washed out. Therefore, with respect to hydrophilic photoactive agents, such as sulfonated aluminum phthalocyanines, the washing step should occur prior to the addition of the photoactive agent.

15 Additional advantages of this embodiment of the process include the ease of incorporation of the process into a large scale treatment process and that less photoactive agent may be required reducing the costs of the process. Further, if the plasma proteins are removed through washing, the photoactive agent can be present in the solution used to resuspend the cells.

20 It is also envisioned, that if the plasma proteins are removed prior to adding the photoactive agent a compound can then be added to the fluid or utilized to absorb the excess photoactive agent. Examples of such compounds include activated carbon.

25 In the treating, or removal step, one attempts to remove substantially all the plasma proteins. Initially the extracellular portion of the blood components could contain greater than 90% by weight plasma. At a minimum the blood component should be treated so that it comprises no more than approximately 5% by weight plasma. Preferably the blood component should be treated so that

30

- 15 -

the total content of the blood component comprises 1% or less by weight plasma, e.g., in the case of red cells.

The body fluid can be treated in a number of ways to reduce the concentration of extracellular component. Examples include filtration, washing, elutriation, and chromatography.

With respect to a blood cell component, as used herein "washing" refers to a process by which the blood component is centrifuged. This results in a pellet and supernatant. The supernatant is then removed and the pellet can be resuspended through the addition of, for example, a buffered saline solution. If desired, a storage solution can be used to resuspend the cells. By using a storage solution, after the irradiation phase of the process the blood component can be stored. However, as set forth in detail below, prior to adding any protein containing substance a predefined period must elapse after irradiation.

If desired, a number of washing steps can be utilized.

During the washing step, a "detergent" can be used to extract excess lipophilic photoactive agents from the blood cell compartment. For example, a lipophilic phospholipid solution can be used to resuspend the cells. Such lipophilic phospholipid solutions include triglycerides (LCTs, MCTs, and SCTs) and fatty acids.

After the washing steps are completed, the product is then irradiated with light having the appropriate wavelength(s). This step can proceed as follows: in the case of red cells treated with a photosensitizer benzoporphyrin derivative, the red cell sample can be exposed to light of a wavelength centered at

- 16 -

approximately 690 nm for an appropriate period of time, for example, 30 seconds to six hours.

If desired, after the irradiation step, a further washing step, or other removal step can be performed.

5 Pursuant to the present invention, after the irradiation step, the blood component, is not combined with additional plasma and/or other protein containing substances either in vivo or in vitro for a predefined period of time. The irradiation of the photoactive agents causes the cellular component, e.g., red cells, 10 to be activated so that they will nonspecifically bind with plasma proteins and become coated with IgG.

As set forth below, it has been found that for cells treated with BPDs after approximately three (3) hours the 15 cellular component, e.g. red blood cells, will not substantially bind with plasma proteins. Accordingly, after a predefined time period, e.g., at least 3 hours and preferably 18 hours, the cells can then be infused into a patient or combined with plasma or other protein 20 containing substances

By way of example, and not limitation, examples of the present invention will now be given:

EXAMPLE 1

25 This example examines the virucidal and immunological consequences of treating red blood cells (RBCs) with benzoporphyrin derivative (BPD) plus washing prior to red light activation on red cell concentrates as a function of BPD dose.

The following materials were used:

- 30
1. Petri dish 150 centimeters in diameter.
 2. AS-1 human red blood cell concentrate.
 3. Physiologic phosphate buffered saline solution (PBS).

- 17 -

4. ARC-8 storage media Lot NR 5203 American Red Cross (Vo Sanguinis 60:88-98 1991).
5. 150 ml blood storage bag (PL146).
6. BPD 2.02 mg/ml Lot: CB1-91 Quadra Logic Technologies benzoporphyrin derivative (BPD).
7. Vesicular Stomatitis Virus (VSV).
The procedure used was as follows:
 1. Approximately 216 ml of blood was spiked with VSV to achieve 1×10^6 pfu/ml (2.16 ml of 10^8 VSV in 216 ml AS-1 RBCs) and incubated for 1 hour with agitation prior to the addition of BPD.
 2. 31 ml of blood volume was aliquoted into 50 ml centrifuge tube. BPD was added into the tubes directly to achieve a final concentration of 0, 1.0, or 1.5 ug/ml, mixed and allowed to equilibrate with the blood for 1 hour prior to wash.
 3. RBCs were washed two times using PBS, centrifuged for 10 min at 2500 x g. The wash volume was 25 ml and the samples were gently vortexed between wash steps to insure good mixing. For the last wash, the cells were resuspended to a total volume of 31 ml using PBS.
 4. The blood was exposed in the petri dish in a light box with agitation (irradiation 6.5 Joules/cm^2) (GE red lamps fluorescent at 1.8 mW/cm^2) for 1 hour.
 5. The post-irradiated samples were transferred to 50 ml centrifuge tubes.
 6. The tubes were centrifuged for 10 minutes at 2500 x g and the supernatant was discarded. RBCs were washed out with one wash of ARC-8. For the last wash the samples were brought up to a total volume of 31 ml using ARC-8.

7. Samples (3 ml aliquots) for quantitation of viral kill were collected and assayed on the day of irradiation.

5 8. Samples (2 ml aliquots) for assessing the cell physiology were collected on the days 1, 7, 14, and 28 post-irradiation. Parameters measured were hemoglobin, hematocrit and direct anti-globulin test (DAT). The DAT test was performed according to the
 10 conventional method (as described in the American Association for Blood Banks Technical Manual, 10th edition, 1990, editor Richard H. Walker, ISBN 0-915355-75-2 pages 147-157). Prior to performing the DAT test, RBCs were allowed to incubate for greater than 3 hours and then were placed in autologous
 15 plasma at 37 dg C for 1 hour.

The tubes were labeled using the following information:

Code #

A=VSV NO BPD no wash no light no wash
 20 B=VSV NO BPD 2x wash/PBS no light 1x wash/ARC-8
 C=VSV 1.5ug/ml BPD no wash light no wash
 D=VSV 1.0ug/ml BPD 2x wash/PBS light 1x wash/ARC-8
 E=VSV 1.5ug/ml BPD 2x wash/PBS light 1x wash/ARC-8

25

Sample Code	Storage Day	Virus TCID ₅₀	P L - H G B (mg/dL)	Hemolysis %	DAT Result -negative +positive
-------------	-------------	--------------------------	---------------------	-------------	--------------------------------------

A	1	>7.25	49		-
E	1	4	141		-
30 C	1	3	45		+
D	1	<2	66		-
E	1	<2	78		-
A	7		111	0.35	
E	7		166	0.30	
35 C	7		154	0.31	

- 19 -

	D	7	106	0.34
	E	7	106	0.40
	A	14	125	0.39
5	B	14	137	0.28
	C	14	395	0.71
	D	14	120	0.48
	E	14	117	0.46
	A	28	186	0.50
10	B	28	204	0.43
	C	28	1650	2.23
	D	28	195	0.65
	E	28	284	0.98

Virus TCID₅₀ represents the tissue culture infectious dose per ml of red cells for each sample on a log scale. For example, a value of 3 indicates 1,000 infective virus per ml and a value of <2 means less than 100 infective virus per ml.

The indicator cells for the VSV assay were Vero cells grown in 96 well microtiter plates. The assay methods employed basic virology techniques as summarized in Virology, Wolfgang K. Joklik, second edition, "The Nature, Isolation, and Measurement of Animal Viruses," page 10, 1985. PL-HGB represents the supernatant hemoglobin values from the stored blood samples. HCT represents the hematocrit of the stored blood samples. % Hemolysis represents the percentage of red cells have been lysed.

DAT results are either positive (+) or negative (-) based upon agglutination of RBCs with a rabbit anti-human IgG antibody. A positive result is demonstration of the RBCs being coated with human IgG.

The results of this experiment demonstrate that the wash method of the present invention (Samples D, E) results in greater viral reduction than in the non-wash method (Sample C) even when lower concentrations of BPD are employed. The cells treated with the wash method

- 20 -

have better cell physiology characteristics: less hemolysis upon storage and negative DAT results after being challenged with plasma.

EXAMPLE 2

5 The goal of this study was to compare the virucidal and immunological consequences of treating RBCs with benzoporphyrin derivative (BPD) using both a nonwash method and a wash method as a function of light exposure time.

10 The materials used were the same as in Example 1. The procedure below was followed to generate the following Samples A-F:

The tubes were labeled using the following information:
Code #

15	A=VSV no BPD	no wash	no light	no wash
	B=VSV no BPD	no wash	no light	1x wash/ARC-8
	C=VSV no BPD	no wash	light	no wash
	D=VSV no BPD	2x wash/PBS	light	1x wash/ARC-8
	E=VSV 1.0ug/ml BPD	no wash	light	no wash
20	F=VSV 1.0ug/ml BPD	2x wash/PBS	light	1x wash/ARC-8

1. Approximately 256 ml of blood was spiked with VSV to achieve 1×10^6 pfu/ml (2.56 ml of 10^8 VSV in 216 ml AS-1 RBCs) and incubated for 1 hour with agitation prior to added BPD.

25 2. 31 ml of blood volume was added into 50 ml centrifuge tubes. BPD was added into the tubes directly to achieve a final concentration of 1.0 ug/ml, mixed and allowed to equilibrate with the blood for 1 hour prior to the next step.

30 3. For the nonwash method (Sample E), the blood was exposed in the petri dish in light box with agitation (GE red lamps at 1.8 mW/cm^2) and agitated with a horizontal shaker (100 rpm).

4. a) For the wash method (Sample F), RBCs were washed two times with PBS, and centrifuged for 10 min. at 2500 x g. The wash volume was 25 ml and the samples were gently vortexed between wash steps to insure good mixing. After the last wash with PBS, the samples were brought to a total volume of 31 ml.

b) The blood was exposed in the petri dish in a light box with agitation as described in Step No. 3 above.

5. For both methods, samples (1 ml aliquots) were collected for quantitation of viral killing at 15, 30, 45, and 60 minutes. Samples were assayed on the day of irradiation.

6. The post-irradiated samples were transferred to 50 ml centrifuge tubes.

7. The tubes were centrifuged for 10 min. at 3000 rpm and the supernatants were discarded. Samples B and F RBCs were washed once with ARC-8. After the last wash, the samples were brought to a total volume of 27 ml using ARC-8.

8. Samples (3 ml aliquots) for assessing the cell physiology were collected on the days 1, 7, 14, and 28 post-irradiation. Parameters measured were hemoglobin, hematocrit, and DAT status.

Sample

Code Sample Description

- A VSV no BPD no wash no light
- B VSV no wash no light 1x wash/ARC-8
- C VSV no BPD no wash light
- D VSV no BPD 2x wash/PBS light 1x wash/ARC-8
- E VSV 1.0ug/ml BPD no wash light no wash
- F VSV 1.0ug/ml BPD 2x wash/PBS light 1x wash/ARC-8

- 22 -

	Code	Stor- a g e Day	V i r u s TCID ₅₀ after 60 minutes l i g h t exposure	PL-HGB (mg/dL)	Hemo- lysis ‡	D A T Result
5	A	1	7.25	25	0.07	-
	B	1	6.7	53	0.10	-
10	C	1	7.25	61	0.18	-
	D	1	5.85	175	0.21	-
	E	1	4.8	70	0.20	+
	F	1	<2.0	71	0.15	-
15	A	7		78	0.23	
	B	7		61	0.11	
	C	7		76	0.21	
	D	7		173	0.24	
	E	7		87	0.22	
	F	7		83	0.26	
20	A	14		86	0.25	
	B	14		96	0.18	
	C	14		90	0.26	
	D	14		174	0.26	
	E	14		156	0.40	
25	F	14		136	0.42	
	A	28		116	0.33	
	B	28		108	0.23	
	C	28		93	0.26	
	D	28		54	0.06	
30	E	28		350	0.64	
	F	28		215	0.73	
	A	35		212	0.62	

- 23 -

	B	35	69	0.20
	C	35	90	0.25
	D	35	123	0.20
	E	35	233	0.46
5	F	35	195	0.62

Figure 2 illustrates graphically BPD inactivation of VSV as a function of light dose using nonwash and wash methods. The BPD dose is 1.0 ug/ml for both samples.

10 Results of the experiments demonstrate that the rate of viral killing was the same for nonwash and wash method and a greater overall reduction in virus for the wash method than the nonwash method. This demonstrates that removal of unbound BPD did not diminish the viricidal effect of the treatment. As in Example 1, the wash method resulted in less hemolysis and negative DAT
15 red blood cells.

EXAMPLE 3

20 The following examples also illustrate differences between the viral inactivation process for red cell concentrates treated in the presence or absence of limited amounts of plasma.

Red cell concentrates (RCC) were prepared from whole blood and spiked with a specific amount of virus (Vesicular Stomatitis Virus or VSV) in a manner similar to the protocol described in Example 1. For the plasma
25 limitation method, samples were washed prior to light exposure. These examples evaluate the following parameters: vesicular stomatitis virus (VSV) (VSV is used as a model virus in these studies) inactivation/
30 depletion and DAT results.

BPD STUDY

Comparison of results from viral inactivation studies using the following two procedures:

- 24 -

- a) no plasma limitation method;
 b) plasma limitation method.

TABLE 1

NO PLASMA LIMITATION METHOD

5 (Approximately 14% plasma present)

	Exper- iment #	BPD ($\mu\text{g/ml}$)	Viral Depletion (logs)	% Hemolysis (on storage day)	DAT
10	1	1.0	4-6		Positive
		1.5	>6		Positive

TABLE 2

PLASMA LIMITATION METHOD

	Exper- iment #	BPD ($\mu\text{g/ml}$)	Viral Depletion (logs)	% Hemolysis (on storage day)	DAT
15	1	1.0	>6		negative
		1.5	>6		negative
20	2	0.75	>6		negative
		1.0	>6		

For the results shown in Tables 3 and 4, the following procedure was followed:

25 For Table 3, 21 ml packed red cells were washed three times in PBS (total volume 50 ml) followed by one wash (50 ml total volume) in ARC-8 (red cell storage solution). Aliquots were prepared from the washed RC as follows: $>10^6$ pfu VSV/ml was added to RC. 2%, 3%, or 30 5% plasma was added to RC in ARC-8 (4 sample groups).

Aliquots of each sample group were treated with BPD (0, 0.25, 0.5, or 0.75 $\mu\text{g/ml}$) for one hour followed by exposure to red light (light box similar to that

described in Example 1) for one hour. Samples were assayed for VSV inactivation (plaque assay) and DAT status was determined visually immediately following treatment and after plasma challenge. Plasma challenge
 5 involved storage of treated RCC for approximately 18 hours (overnight) at 4°C followed by addition of 100% plasma for one hour at 37°C.

It should be noted that the initial washing of red
 10 cells was performed only to ensure that addition of amounts of plasma indicated resulted in the concentrations specified.

TABLE 3

		DAT (+/-)		
		Pre*	Post*	VSV Inactivation
RCC+2% Plasma				
	Light Only	-	-	(input 7.0 logs)
20	0.25 µg/ml	-	-	3.2 logs
	0.5 µg/ml	-	-	7.0 logs
	0.75 µg/ml	-	-	7.0 logs
RCC+3% Plasma				
25	Light Only	-	-	(input 6.9 logs)
	0.25 µg/ml	-	-	2.6 logs
	0.5 µg/ml	-	-	6.3 logs
	0.75 µg/ml	-	-	6.9 logs

30

	RCC+5% Plasma				
	Light Only	+	+		(input 7.2 logs)
	0.25 µg/ml	+	+		3.1 logs
	0.5 µg/ml	+	+		5.8 logs
5	0.75 µg/ml	+	+		2.2 logs

*Pre = Preplasma Challenge

*Post = Post Plasma Challenge

10 The results set forth in Table 4 below are for studies performed in a similar manner to those used to generate Table 3.

TABLE 4

DAT +/- VSV Inactivation

15			*Pre	*Post	
	RCC, 4.7% Plasma				
	HT 56%				
	Light Only	-	-		(input 7.3 logs)
20	0.25 µg/ml BPD	-	-		2.2 logs
	0.5 µg/ml BPD	-	-		4.9 logs
	0.75 µg/ml BPD	-	-		6.0 logs
	RCC, 5.9% Plasma				
25	HT 56%				
	Light Only	-	-		(input 7.3 logs)
	0.5 µg/ml BPD	-	-		3.9 logs
	0.75 µg/ml BPD	-	-		5.5 logs
30	1.0 µg/ml BPD	-	-		7.0 logs

RCC, 6.7% Plasma

HT 62%

	Light Only	-	ND	(input 7.4 logs)
	0.5 µg/ml BPD	-	ND	4.5 logs
5	0.75 µg/ml BPD	-	ND	6.9 logs
	1.0 µg/ml BPD	+	ND	7.4 logs

*Pre Pre Plasma Challenge

*Post Post Plasma Challenge

10 ND Not Determined

Table 3 and Table 4 demonstrate that in order to eliminate DAT positivity, it is necessary to perform the viral inactivation procedure in the presence of limited (approximately 5% or less) amounts of plasma.

15 The data, as well as the data set forth in Example 4, also refutes the Wagner et al publication referred to previously, in that the inventors have shown that it is possible to prevent a positive DAT score (significant levels of IgG binding to red cell surface) in red cells that have been treated by a plasma limitation method as long as the treated blood component is not exposed to plasma proteins for a defined period following light exposure. In the case of BPD, this period has been shown to be 3 hours (minimum) and preferably 18 hours.

25 Other Photosensitizers:

Treatment of RCC was carried out using both the Plasma Limitation Method and No Plasma Limitation Method to assess DAT status of RC following treatment with a variety of photosensitizer and light. White light was utilized in studies with photofrin and merocyanine 540; red light was utilized with aluminum phthalocyanine. Doses of each photosensitizer examined are shown in the table below.

- 28 -

		TABLE 5	
PHOTOSENSITIZER	DOSE ($\mu\text{g/ml}$)	DAT SCORE	
		No Plasma Limitation	Plasma Limitation
5	Photofrin	-	-
	0 (light only)	-	-
	5	+	-
10	10	+	-
	20	+	-
	20 (no light)	-	-
15	Tetrasulfonated Aluminum	-	-
	0 (light only)	-	-
	4.7 (5 μM)	+	-
	9.4 (10 μM)	+	-
	18.8 (20 μM)	+	-
20	Merocyanine	+	-
	10	+	-

EXAMPLE 4

The following experiment demonstrate, using flow cytometry, that red cells treated by a plasma limitation method with BPD and light, do not have any significant affinity for binding IgG if challenged (by plasma addition) at 3 hours following light exposure.

The treatment protocol was as follows:

Red cell concentrate (RCC) was prepared from whole blood (RCC with approximately 14% plasma in Adsol).

20 ml RCC was centrifuged at 2000 rpm for 10 minutes.

The supernatant (plasma/Adsol) was removed.

- 29 -

The resultant pellet (RC) was resuspended to 50 ml with Adsol and then centrifuged at 2000 rpm for 10 minutes.

5 The supernatant was removed and RC resuspended to 20 ml with adsol.

BPD was added to samples as follows: 0, 0.5, 0.75, 1.0 ug BPD/ml.

The sample was incubated for 1 hour in the dark, and exposed to red light (light box) for 1 hour.

10 The cells were left in the dark at room temperature for 3 hours.

Autologous plasma was added to samples to give 14% plasma in Adsol. The samples were stored at 4°C overnight.

15 Flow cytometry was performed.

Preparation of red cells for Flow Cytometry was as follows:

1. Dilute RCC 1/10 in PBS.
- 20 2. Add 50 ul of diluted RCC to a 12x75 mm snap cap tube.
3. Add approximately 3 ml of PBS.
4. Centrifuge for 2 min. at approximately 3000 rpm.
5. Aspirate supernatant.
6. Mix the cells in the remaining PBS by gently flicking the tube.
- 25 7. Add approximately 3 ml of PBS (2nd wash).
8. Centrifuge as before.
9. Aspirate the supernatant.
10. Mix the cells in the remaining drop of PBS by gently flicking the tube.
- 30 11. Add 400 ul of 1/100 of 1'Ab.
12. Incubate at 4°C for 30-40 min., shaking the tube occasionally.

- 30 -

13. Add PBS and wash 2x as before.
14. Add 400 ul of 2'Ab.
15. Incubate in the dark for 30-40 min., shaking the tubes occasionally.
- 5 16. Wash the cells 2x with PBS as before.
17. Resuspend cell pellet in 600 ul of 1% paraformaldehyde in BPS.
18. Store samples in the dark at 4°C until analyzed using flow cytometry, samples can be stored up to 3 days.
- 10

The following reagents were used:

1'Ab: Rabbit anti Human IgG (Serotec ordered from Cedarlane, cat # STAR 33).

15 2'Ab: Goat F(ab) anti Rabbit IgG (whole molecule) FITC ordered from Cappel, cat # 55658.

1% paraformaldehyde in PBS (w/v): Heat until 70°C to dissolve, do not boil. When cooled adjust pH to 7.4. Keep in the dark at 4°C, shelf life 6 months.

20 The following table illustrates the results from flow cytometric analysis of treated RC which were labeled with antisera to determine the presence of IgG on their surface.

25 Cells contained in AREA 1 are considered negative for IgG binding. Cells contained in AREA 2 are considered positive. Figures 3a-3c set forth representative graphs.

Percent* Cells Contained in:

BPD Dose (ug/ml)	<u>AREA 1 (NEGATIVE)</u>		<u>AREA 2 (POSITIVE)</u>	
	Pre**	Post***	Pre**	Post***
30 0	67	66	1	1
0.5	71	70	2	2
0.75	73	72	3	2
1.0	76	75	3	3

*Note that representative graphs, Figures 3a-3c, illustrate total numbers of cells as 100%. The cells not accounted for in Areas 1 and 2 are contained in the total cell population, Area 4. For the table above, the remaining cells are all less fluorescent (more negative) than the population contained in Area 1.

In the Figures, red cell concentrate (RCC) = 14% plasma, 55% HCT, washed 1x red cell concentrate (1x RCC), and no wash, supernatant removed = no wash RCC.

**Pre: Pre-Plasma Challenge
 ***Post: Post-Plasma Challenge

EXAMPLE 5

In another experiment, performed in a similar manner to Example 4, 1.0 µg BPD/ml was used to treat RCC that had been washed once in Adsol and resuspended in Adsol. Following light exposure, 14% autologous plasma was added after a 3 hour waiting period.

RC were then treated in the following ways: either: left at 4°C overnight, see (1); or left at 4°C overnight by heating to 37°C for 1 hour, see (2); or left for another hour at room temperature in 14% plasma, then heated for 1 hour at 37°C, then stored at 4°C overnight, see (3). Flow cytometry was then carried out on all samples.

Results from flow cytometry were as follows:

BPD Dose (ug/ml)	<u>Percent Cells Contained in:</u>	
	<u>AREA 1 (NEGATIVE)</u>	<u>AREA 2 (POSITIVE)</u>
¹ 0	72	5
³⁰ 1	82	4
² *0	72	0
*1	83	3

- 32 -

3	c	75	2
1		86	4

*Illustrated on graphs set forth as Figures 4a-4b.

5 These results demonstrate that there is no significant difference from controls in terms of IgG binding to RC (i.e., they are negative for IgG binding) if one waits for 3 hours prior to challenge with plasma, even when the cells are challenged at 37°C, simulating an in vivo situation.

10 It should be understood that various changes and modifications to the presently preferred embodiments described herein will be apparent to those skilled in the art. Such changes and modifications can be made without departing from the spirit and scope of the present invention and without diminishing its attendant advantages. It is therefore intended that such changes and modifications be covered by the appended claims.

15

WE CLAIM:

1. A method for destroying pathogens in a fluid containing cells prepared for medical use comprising the steps of:

5 treating the cells in the presence of a photoactive agent under conditions that effect the destruction of the pathogen , the treatment step being performed in a fluid having a content of not more than 5% by weight extracellular protein; and

10 preventing the treated cells from contacting additional extracellular protein for a predetermined time period.

2. The method of Claim 1 wherein the cells are red blood cells.

15 3. The method of Claim 1 wherein the photoactive agent is chosen from the group consisting of porphyrins, porphyrin derivatives, merocyanines, phthalocyanines including aluminum phthalocyanines, pyrrolic macrocycles, psoralens, photoactive dye stuffs, and methylene blue.

20 4. The method of Claim 1 wherein the cells are an in vivo cell culture.

5. The method of Claim 1 wherein the fluid includes a component chosen from the group consisting of bone marrow and platelets.

25 6. The method of Claim 1 wherein the fluid containing cells are prepared by:

adding photoactive agent to a body fluid containing cells and extracellular fluid containing protein;

30 substantially separating the cells from the extracellular fluid; and

suspending the cells in a fluid substantially free of protein.

- 34 -

7. The method of Claim 1 wherein the fluid containing cells and photoactive agent is prepared by:

providing a body fluid containing cells and extracellular fluid containing proteins;

5 substantially separating the cells from the extracellular fluid containing protein;

resuspending the cells with a fluid substantially free of protein; and

10 adding to a resultant suspension a photoactive agent.

8. The method of Claim 7 wherein the fluid that is substantially free of protein includes the photoactive agent.

9. A method for destroying a pathogen in a blood component using a photoactive agent comprising the steps of:

treating the blood component to at least substantially reduce plasma proteins;

15 irradiating a resultant blood component with light of an appropriate wavelength to inactivate pathogens; and

20 preventing the resultant fluid from contacting plasma proteins either in vivo or in vitro for a period sufficient to prevent the blood component from exhibiting a positive DAT test.

25 10. The method of Claim 9 wherein the photoactive agent is chosen from the group consisting of porphyrins, porphyrin derivatives, merocyanines, phthalocyanines, aluminum phthalocyanine, pyrrolic macrocycles, psoralens, and photoactive dye stuffs.

30 11. The method of Claim 9 wherein the plasma proteins are reduced prior to the addition of the photoactive agent.

- 35 -

12. The method of Claim 9 wherein the plasma proteins are reduced after the addition of the photoactive agent.

5 13. The method of Claim 9 wherein the plasma is reduced so that it comprise no more than approximately 5% by weight of the blood component.

14. The method of Claim 9 wherein the treating step includes washing the blood component.

10 15. The method of Claim 9 including a plurality of washing steps.

16. The method of Claim 9 wherein the resultant fluid is prevented from contacting additional plasma proteins for at least approximately 3 hours.

15 17. The method of Claim 9 wherein the resultant fluid is prevented from contacting additional plasma proteins for at least approximately 18 hours.

18. A method for inactivating pathogens in a body fluid including cells and extracellular fluid containing proteins comprising the steps of:

20 adding a photoactive agent to a collected body fluid;

treating the body fluid to at least substantially reduce unbound photoactive agent and extracellular fluid proteins; and

25 irradiating with an appropriate light a resultant body fluid to inactivate pathogens in the resultant body fluid.

19. The method of Claim 18 wherein the body fluid is blood.

30 20. The method of Claim 18 wherein the photoactive agent is chosen from the group consisting of porphyrins, porphyrin derivatives, merocyanines, phthalocyanines,

- 36 -

aluminum phthalocyanine, pyrrolic macrocycles, and photoactive dye stuffs.

21. The method of Claim 18 wherein the body fluid includes an in vitro cell culture.

5 22. The method of Claim 18 wherein the body fluid includes bone marrow.

23. The method of Claim 18 wherein the irradiated resultant body fluid is washed.

10 24. The method of Claim 18 wherein extracellular fluid is reduced so that it comprises not more than 5% by weight volume of the body fluid.

25. A method for inactivating a pathogen in a blood component comprising the steps of:

15 adding a photoactive agent to a collected blood component;

treating the blood component to reduce unbound photoactive agent and to reduce plasma to approximately 5% or less of the total weight of the blood component; and

20 irradiating a resultant blood component with light of an appropriate wavelength to inactivate pathogens.

26. The method of Claim 25 wherein the photoactive drug is chosen from the group consisting of porphyrins, porphyrin derivatives, merocyanines, phthalocyanines, 25 aluminum phthalocyanine, pyrrolic macrocycles, psoralens, and photoactive dye stuffs.

27. The method of Claim 25 including the step of allowing the photoactive agent to equilibrate with the blood component prior to treating the blood component.

30 28. The method of Claim 27 wherein the step of allowing the photoactive agent to equilibrate has a duration of approximately 5 minutes to 6 hours.

- 37 -

29. The method of Claim 27 wherein the step of allowing the lipophilic photoactive agent to equilibrate has a duration of at least one hour.

5 30. The method of Claim 27 wherein the treating step includes:

centrifuging the blood component to form a pellet; removing the supernatant; and resuspending the supernatant.

10 31. The method of Claim 25 wherein the treating step includes a plurality of washing steps.

32. The method of Claim 25 including the step of adding to the resultant blood component a composition including plasma proteins after waiting at least 3 hours.

15 33. The method of Claim 25 including the step of infusing the resultant blood component into a patient after a 3 hour period.

34. The method of Claim 25 wherein the lipophilic photoactive drug is a benzoporphyrin derivative.

20 35. The method of Claim 25 wherein the treating step includes the step of adding to the blood component a lipophilic phospholipid reagent.

36. The method of Claim 25 comprising a plurality of washing steps.

25 37. The method of Claim 25 wherein the treating step reduces the plasma proteins to approximately 1% or less by weight of the total blood component.

38. The method of Claim 25 including the step of washing an irradiated resultant blood component.

30 39. The method of Claim 25 including the step of utilizing a compound to absorb excess photoactive drug.

40. A method for inactivating a pathogen in a blood component including red cells comprising the steps of:

adding a photoactive agent to a collected blood component including red cells;

allowing the photoactive agent to equilibrate with the blood component;

5 washing the blood component to remove unbound photoactive agent and reduce the plasma to approximately 5% or less by weight of the blood component;

irradiating a resultant blood component with light of an appropriate wavelength to inactivate pathogens; and

10 preventing the irradiated blood component from contacting a protein containing composition for at least approximately 3 hours.

41. The method of Claim 40 wherein the photoactive agent is lipophilic.

15 42. The method of Claim 40 wherein the step of allowing the photoactive agent to equilibrate has a duration of approximately 5 minutes to 6 hours.

20 43. The method of Claim 40 wherein the step of allowing the lipophilic photoactive agent to equilibrate has a duration of at least one hour.

44. A method for inactivating a pathogen in a blood component including red cells comprising the steps of:

25 washing the blood component to reduce the plasma to approximately 5% or less by weight of the blood component;

adding a photoactive agent to the blood component; irradiating a resultant blood component with light of an appropriate wavelength to inactivate pathogens; and

30 preventing the irradiated blood component from contacting a protein containing composition for at least 3 hours.

45. The method of Claim 44 wherein the photoactive agent is hydrophilic.

1/4
FIG. 1

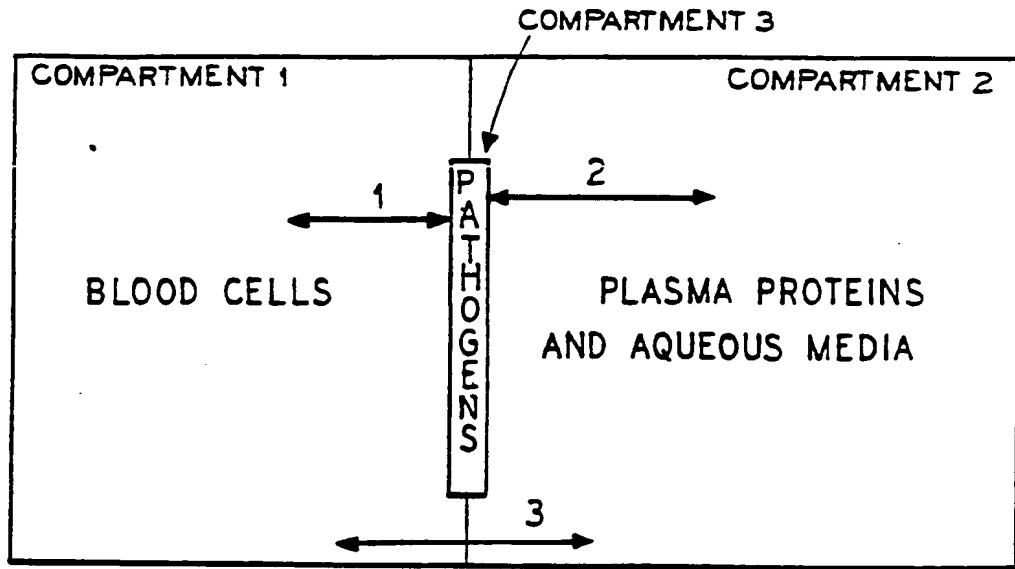
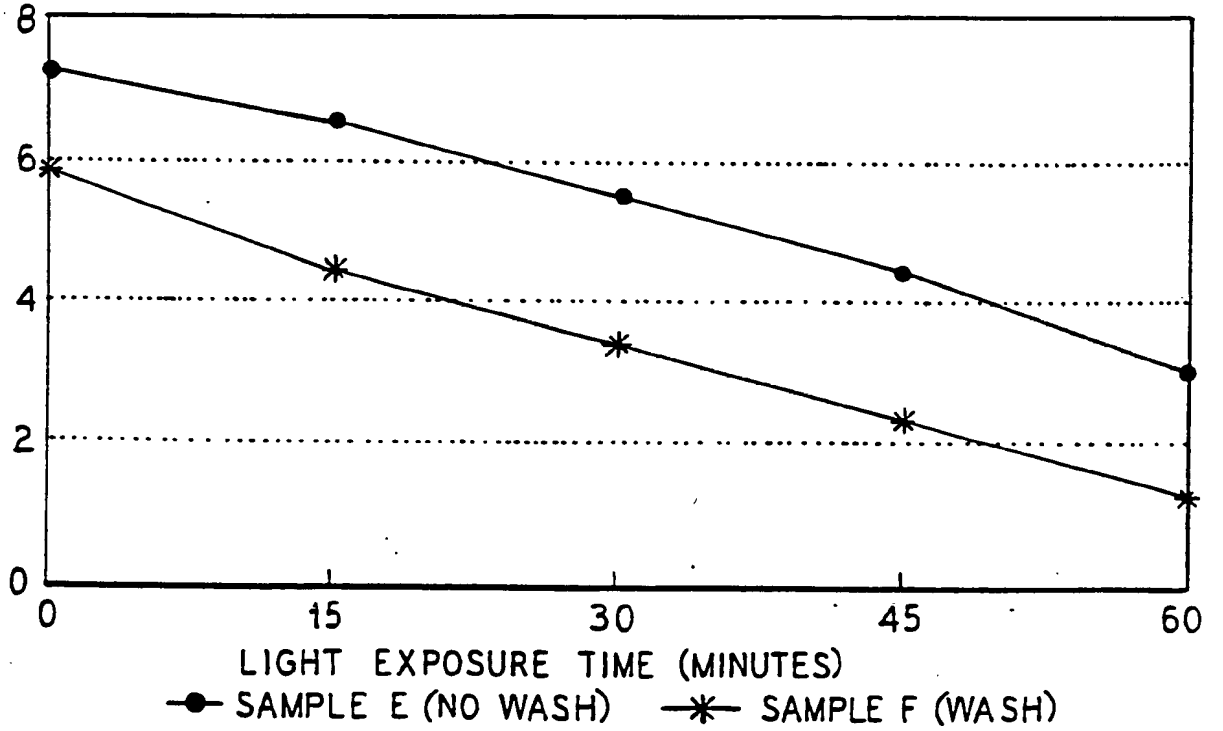


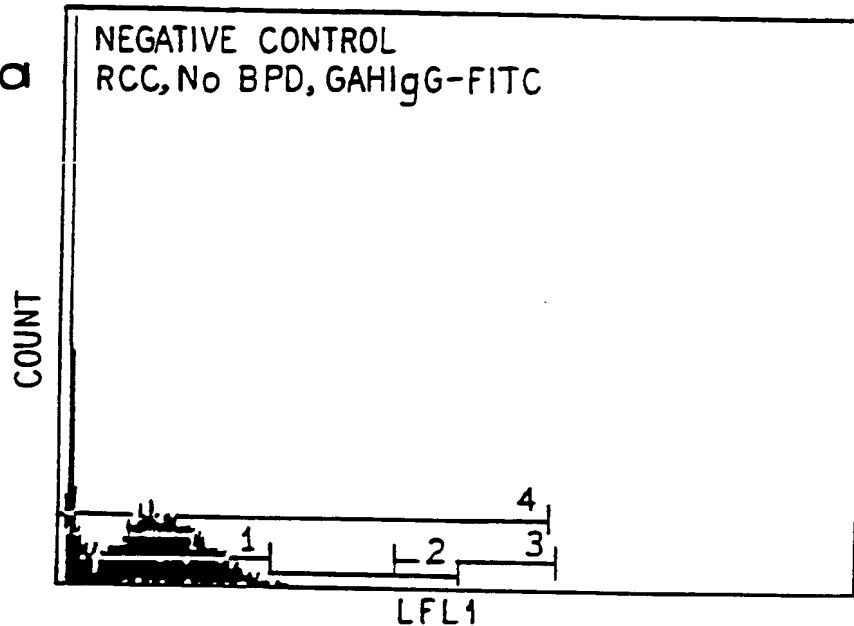
FIG. 2

VSV TITER (LOG TCID50)



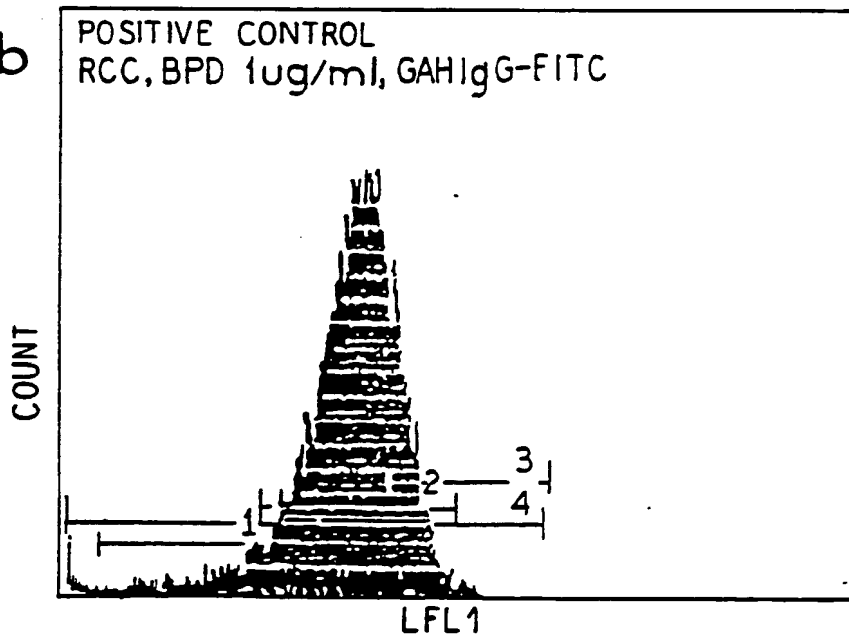
2/4

FIG. 3a



	MIN	MAX	COUNT	PERCENT	MEAN	SD	%HPCV
1	1.416	6.410	6370	65.1	2.603	1.435	42.5
2	6.415	33.24	65	0.7	7.881	1.377	43.0
3	18.37	76.74	3	0.0	23.64	1.19	8.38
4	1.052	72.71	9777	100.0	1.959	1.692	57.8

FIG. 3b

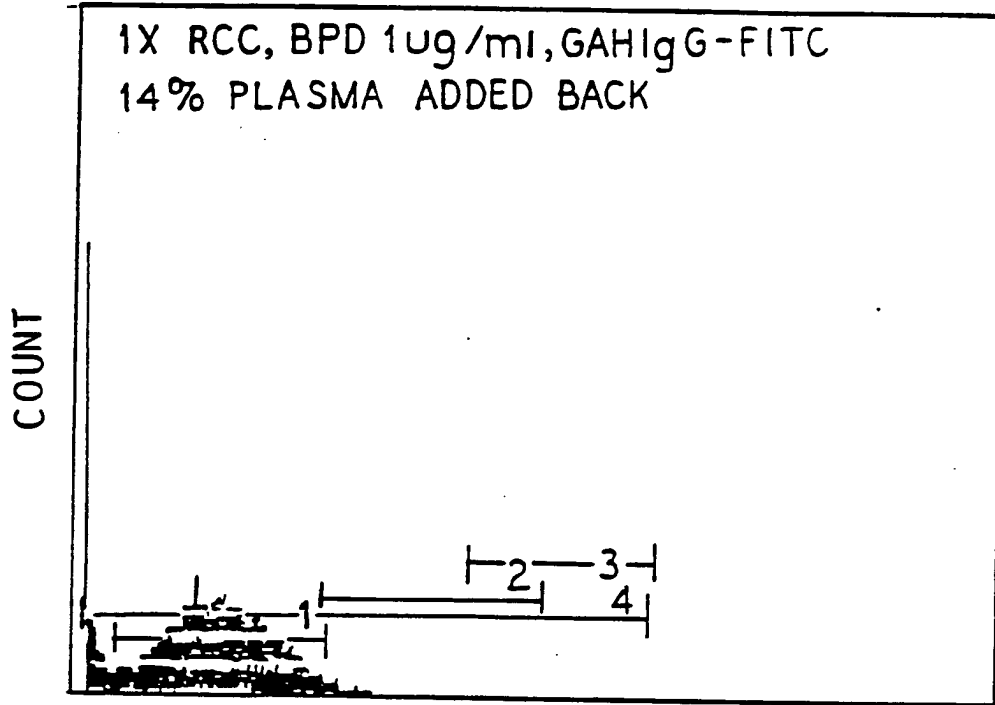


	MIN	MAX	COUNT	PERCENT	MEAN	SD	%HPCV
1	1.416	6.41	645	7.0	4.114	1.484	41.0
2	5.916	33.24	8580	93.0	13.75	1.43	11.8
3	18.37	76.74	1875	28.3	21.52	1.18	12.6
4	1.052	72.71	9225	100.0	12.56	1.69	11.8



3/4

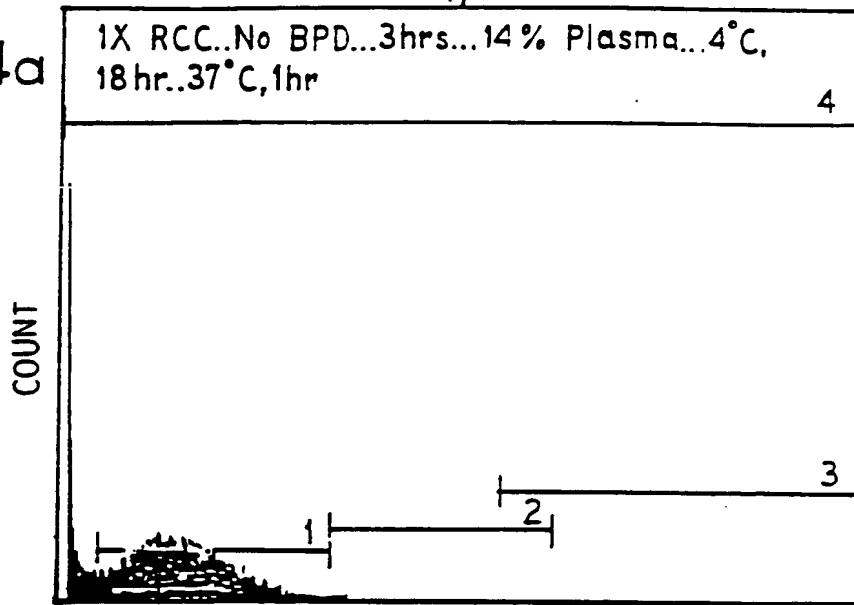
FIG. 3c



	MIN	MAX	COUNT	PERCENT	MEAN	SD	%HPCV
1	1,416	6,41	7545	74.9	2,859	1,457	41.4
2	5,916	33.24	342	3.4	6.727	1,168	45.6
3	18.37	76.74	1	0.0			
4	1,052	72.71	100 65	100.0	2.348	1.736	58.6

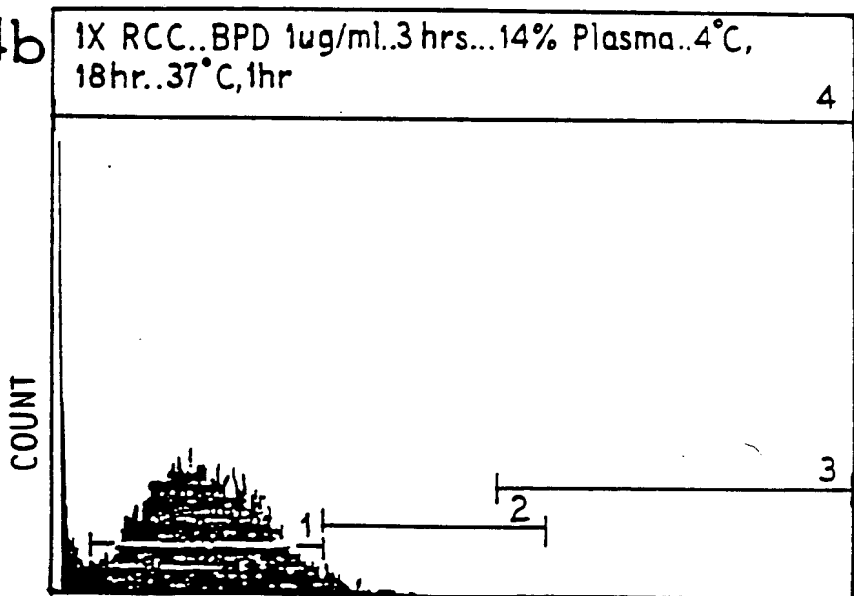
4/4

FIG. 4a



	MIN	MAX	COUNT	PERCENT	MEAN	SD	% HPCV
1	1.416	18.70	6043	71.9	2.919	1.531	41.6
2	10.43	72.71	20	0.2	13.26	1.26	8.62
3	47.25	1023.	5	0.1	468.2	2.8	
4	1.024	1023.	8404	100.0	2.245	1.820	56.3

FIG. 4b



	MIN	MAX	COUNT	PERCENT	MEAN	SD	% HPCV
1	1.416	18.7	8213	83.3	3.668	1.631	42.6
2	10.43	72.71	287	2.9	12.37	1.22	43.9
3	47.25	1023.	1	0.0			
4	1.024	1023.	9856	100.0	3.198	1.937	58.6

A. CLASSIFICATION OF SUBJECT MATTER

IPC(S) :A01N 1/02

US CL :435/2

According to International Patent Classification (IPC) or to both national classification and IPC

B. FIELDS SEARCHED

Minimum documentation searched (classification system followed by classification symbols)

U.S. : 435/2

Documentation searched other than minimum documentation to the extent that such documents are included in the fields searched

Electronic data base consulted during the international search (name of data base and, where practicable, search terms used)

CAS ONLINE, BIOSIS, APS

C. DOCUMENTS CONSIDERED TO BE RELEVANT

Category*	Citation of document, with indication, where appropriate, of the relevant passages	Relevant to claim No.
Y	Transfusion, volume 30, number 6, issued 1990, H. Neyendorff <u>et al.</u> , "Development of a Model to Demonstrate Photosensitizer-Mediated Viral Inactivation of Blood", pages 485-490, see abstract.	1-45
Y,P	US, A, 5,091,385 (Gulliya <u>et al.</u>) 25 February 1992, see Table 14.	1-45
X Y	Biochemical Journal, volume 226, issued 1985, A. De Paolis <u>et al.</u> , "The Effect on Photohaemolysis of Variation in the Structure of the Porphyrin Photosensitizer", pages 757-766, see abstract.	1-3, 7, 8-11, 13-16, 44, 45 1-45

 Further documents are listed in the continuation of Box C. See patent family annex.

* Special categories of cited documents:	T	later document published after the international filing date or priority date and not in conflict with the application but cited to understand the principle or theory underlying the invention
A document defining the general state of the art which is not considered to be part of particular relevance	X*	document of particular relevance; the claimed invention cannot be considered novel or cannot be considered to involve an inventive step when the document is taken alone
E earlier document published on or after the international filing date	Y*	document of particular relevance; the claimed invention cannot be considered to involve an inventive step when the document is combined with one or more other such documents, such combination being obvious to a person skilled in the art
L document which may throw doubts on priority claim(s) or which is cited to establish the publication date of another citation or other special reasons (as specified)	Z*	document member of the same patent family
O document referring to an oral disclosure, use, exhibition or other means		
P document published prior to the international filing date but later than the priority date claimed		

Date of the actual completion of the international search

29 JULY 1992

Date of mailing of the international search report

20 AUG 1992

Name and mailing address of the ISA/
Commissioner of Patents and Trademarks
Box PCT
Washington, D.C. 20231

Authorized officer

SANDRA SAUCIER

Facsimile N . NOT APPLICABLE

Telephone No. (703) 308-1084